

States Leading the Way through Dementia Partnerships

2018 HCBS Conference

August 28, 2018

Today's Session

- How can states and communities partner to effectively prepare for the increasing number of individuals living with dementia and their care partners?
- Learn about experiences and initiatives in: Alabama, Georgia and Florida

Speakers

- Victoria Helmly, Alzheimer's and Related Dementias State Plan Coordinator, Georgia Department of Human Services Division of Aging Services
- Rebecca Dillard, Project Director, Georgia Memory Net, Department of Neurology, Emory University School of Medicine
- Stephanie Holmes, Project Coordinator, Dementia Friendly Alabama Initiative, Central Alabama Aging Consortium
- Christine Didion, Program Manager, Dementia Care and Cure Initiative, Florida Department of Elder Affairs
- Meredith Hanley, Director, Community Capacity Building, National Association of Area Agencies on Aging

What Do People With Dementia Want

GLOBAL DEMENTIA CHARTER

'I can live
well with
dementia'

r
if
A
fri
at

Dementia Friendly America Initiative

Initiative Goal

- Foster dementia friendly communities across the US
- A dementia friendly community is informed, safe and respectful of individuals with the disease, their families and caregivers and provides supportive options that foster quality of life.

www.dfamerica.org



Responding to the Need: Dementia Friendly Communities



Dementia Friendly Communities Across U.S.



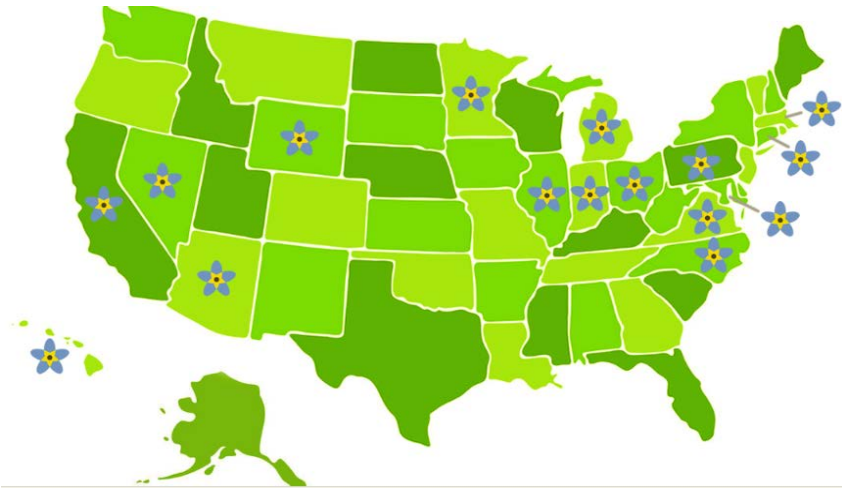
Dementia Friends USA



www.dementiafriendsusa.org

Dementia Friends USA

- Dementia Friends USA is part of a global social awareness movement
- By helping everyone in a community understand what dementia is and how it affects people, each of us can make a difference for people touched by dementia.



Key Stats

- Less than half of people with Alzheimer's receive diagnosis
- 70 percent of older adults with Alzheimer's or another form of dementia live in the community.
- Of individuals with dementia:
 - 74 percent live with someone
 - 26 percent live alone
- Stigma and stereotypes are a barrier to seeking diagnosis and care and an obstacle to well-being and quality of life for those with dementia and their families. Access to community
- Family caregivers provide a majority of long-term services and supports but supply of caregivers is slowly compared to demand (AARP study)



For More Information
Meredith Hanley
mhanley@n4a.org
www.dfamerica.org



georgia
memory net

Georgia Memory Net: A State & Healthcare Partnership

08.28.18

DISCLOSURES

- Georgia Memory Net is funded by the GA Department of Human Services, Division of Aging Services as part of the Georgia Alzheimer's Project passed by GA Assembly FY18 (ongoing)
- No financial conflicts to disclose



LEARNING OBJECTIVES

- Identify key services and community partners within this Georgia-based collaborative for program implementation and sustainability
- Articulate Georgia Memory Net initiative and primary care and community services driven process
- Summarize workflows, processes, and linkages to community services offered via the regional Memory Assessment Centers



STATE OF GEORGIA ROLE & PARTNERSHIP



\$4.12M allocated for Georgia Alzheimer's Project in SFY18 Budget in Georgia Department of Human Services (continued line-item)

Contract with Emory University to carry out contract

Oversight assigned to Division of Aging Services:

Continued role of monitoring, oversight, and coordination of state agency and other partner collaboration

- Reporting and oversight
- Legal & Contracting
- General Assembly
- Area Agencies on Aging
- GA Department of Public Health
- Alzheimer's/Dementia State Plan group
- Other agencies and partners

Georgia Alzheimer's & Related Dementias(GARD) State Plan

- Signed in 2014
- Six work groups
 - Workforce Development
 - Service Delivery
 - Outreach & Partnerships
 - Public Safety
 - Healthcare, Research, & Data
 - Policy
- Georgia Memory Net goals align with State Plan goals
- Input and collaboration between Georgia Memory Net team and GARD work groups



GARD
— collaborative —



Georgia Alzheimer's Project in Action



georgia
memory net



Setting Our Goals:

It's only a wish without a plan.

Our objective is to improve outcomes and quality of life for people dealing with memory loss, while streamlining services and offering more efficient care.



**Improve Assessment
During Annual
Wellness Visits**



**Diagnose Accurately
at Memory
Assessment Clinics**



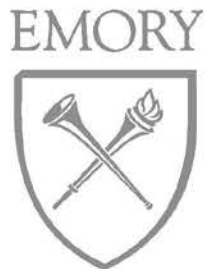
**Improve Care
with PCPs and
Community Services**



**Provide Oversight and
Evaluation of Performance
and Data Collection**

Collaboration is Key:
It takes more than one.

A partnership including academic institutions,
community organizations, professional associations,
and state networks.



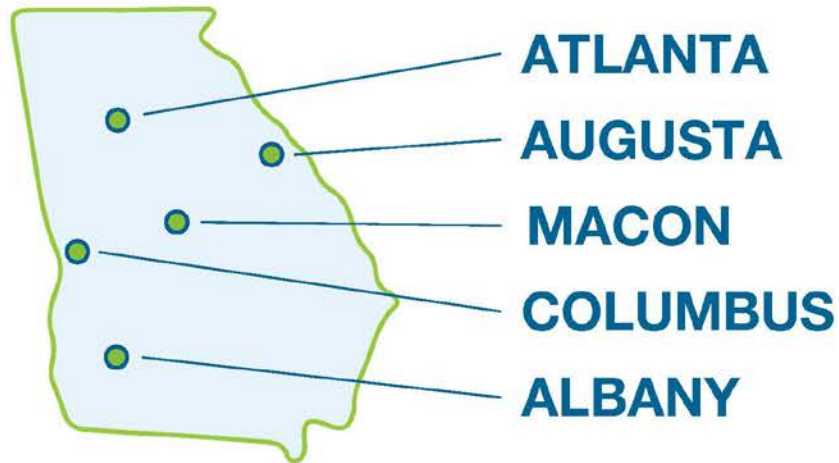
**Georgia Department
of Human Services**



Providing Accessibility:
Launching statewide clinics.

Starting with five clinics in 2018, we hope to have a Memory Assessment Clinic convenient to every Georgian in the near future.

Memory Assessment Clinic Locations



The Process:

An always integrated path.

Our system is designed for efficiency and convenience to all parties involved.



CSE/Community Engagement



**Community
Services
Educator**



**Area Agency
on Aging**



**Individualized care plans
co-developed with
local AAA**



**Connect patients
with local services
for continued care**



**Ongoing follow-up
from GMN central staff
in partnership with AAAs
for continued care coordination**

our collaborators:



THANK YOU!

Questions?



Victoria Helmly, MSW

Alzheimer's and Related Dementias State
Plan Coordinator, GA Division of Aging
Services

Victoria.Helmly@ga.dhs.gov

Rebecca Dillard, MA

Project Director, Georgia Memory Net
Emory University Dept. of Neurology

rdillar@emory.edu

State & Health Care Partnerships: GMN

Slide archive follows for additional information



Establishing the Need:

Know the numbers.

It all adds up: The citizens and healthcare professionals of Georgia need the Georgia Memory Net.

People With Alzheimer's Growing:



140k
[2018]



190k
[2025]

1.4M

People Over
65 Years Old



385k
with self-reported
cognitive impairment

80%

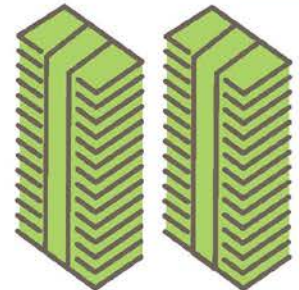
have not yet been
evaluated or treated



**6 Year Average
Delay In
Memory-loss
Diagnosis**

\$2B

In Preventable
Admissions
Expenses



What to Expect:

Key benefits.

Georgians who make appointments at a MAC, and the doctors who recommend them, benefit from a variety of integrated services.



**Trained
Clinicians**



**Comprehensive
Diagnosis and
Care of Planning**



**Community
Services
Educator**



**Education and
Community
Support**



**PCP Receives
and Manages
Care Plan**

Proactive planning
& support services
Expert diagnoses
Increased caregiving
competence & quality
of care

Comprehensive best-practice care plans
In-depth memory evaluations taken off
time-crunched PCPs schedules
Care plans shared with PCPs, patients
& community support

Supported by National
Institutes of Health
Connected to Georgia's
only Alzheimer's Disease
Research Center

GMN for PCPs:

Supporting, not supplanting.

In depth memory evaluations are taken off the schedules of time-crunched PCPs.

**Training
provided
through GMN**



**Reporting
to guide your
ongoing care**

Identifying & Referring:

Three simple steps.

If we can manage these three, outcomes could improve.

1

ENCOURAGE

Annual Wellness
Visits (AWV)



2

ADMINISTER

the Mini-Cog™
assessment tool
(embedded in the AWV)



3

REFER

patient to a Memory
Assessment Clinic if
Mini-Cog™ indicates
an impairment

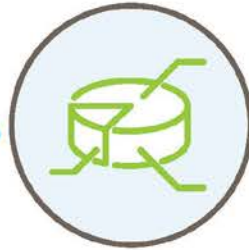
FY19 Targets



**Website
Expansion**



**App
Development**



**Data
Repository
Build**



**Expansion
of MACs and
Community
Services driven
by data**



**Solidified
National
Partners
and Visibility**

What Does It Mean To Be *“Dementia Friendly?”*



More than just being kind...



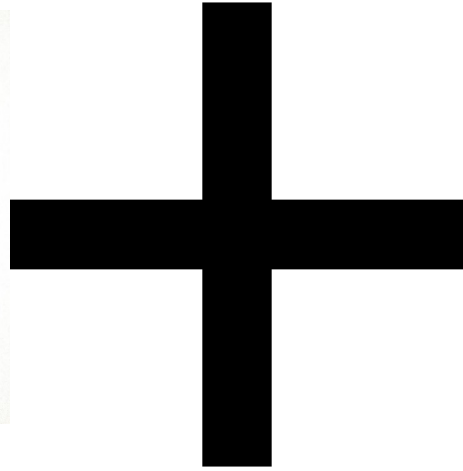
*Included

*Supported

*Engaged

***VULNERABLE!**

Provide an environment where people with dementia
can live and THRIVE!



= Dementia Friendly Communities

2016

ADSS awarded CAAC \$45,000
Dementia Friendly
Communities Grant



CAAC hired me P/T



I reached out to Dementia
Friendly America...



Dementia
Friendly
America™



...Foster a Dementia Friendly Community

STEP 1: Develop a Partner Panel of “Champions”

STEP 2: Convene Partner Panel

STEP 3: Decide “where to begin?”

STEP 4: Kick off your initiative



We Started in Schools

The students of today are the caregivers of tomorrow!

- 137 9th Graders-Alzheimer's Disease Education:
 - Partnered with Troy University
 - Docu-Drama
 - Sparks an interest
 - Creates student involvement
 - Encourages students to think outside their normal comfort zone
 - FUMC RESPITE Ministry

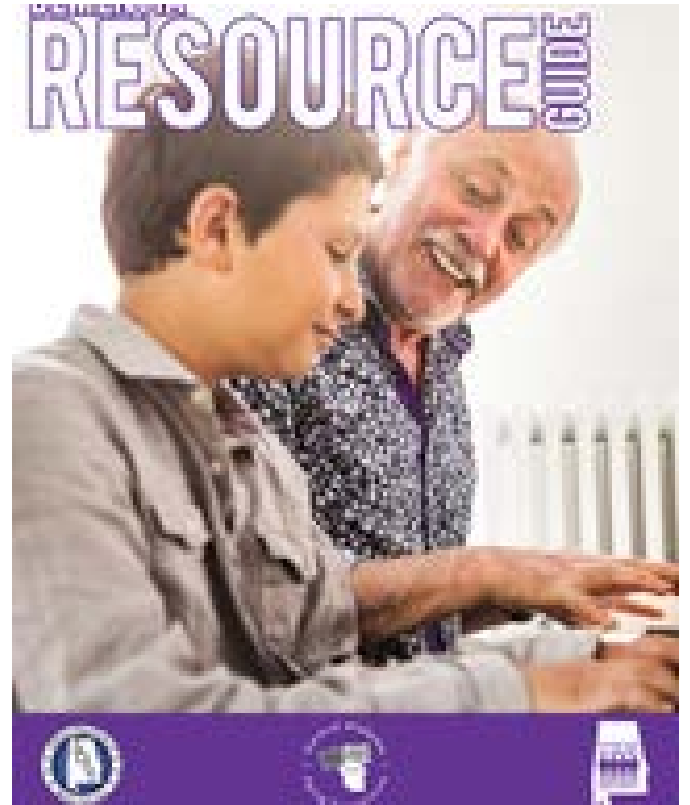
“I am just a little pencil in the hand of a God who is writing a love letter to the world.”





“dementia” - 52M Results

“alzheimers” – 123M Results



Resources

- **Dementia Resource Guide (Electronic & Paper)**
- **Care to Plan Developed**
- **Resource Directory**
- **Dementia Friendly Alabama Website**
- **Respite @ FUMC**
- **PLS / Gizmo Gadget**
- **Plan. Prepare. Share (McGriff developers)**
- **AFA Support Groups**

AFA Support

Alzheimer's Foundation of America

- Caregiver Support (866) 232-8484
- Young Onset Spousal Support TUE 2:30-3:30P (EST)
- Long Term Care Support – THU 4-5P (EST)
- Care Connection Webinar (1P EST)
 - Jul – When its Time to Move to a Care Community – And What To Do next
 - Aug – Guardianship
 - Sep – Drama Improv
 - ✓ Dramatic improvisation can be used as a therapeutic tool for dealing with memory loss.

Training

- **Started with Financial Sector (Banks)**
 - Banks made perfect sense.
 - Tellers on the front line.
 - People want to handle their OWN banking.
 - VDT's
 - Memory Screenings
 - Dementia Education
- **AFA PIC Tour of Alabama Training**

2017

- Awarded \$100,000 DFC Grant
- We selected (5) cities to each receive a \$10,000 Mini-Grant

- ❖ 1st Responder / Law Enforcement Training
- ❖ Brought renown theologian Dr. James Houston to Birmingham April 26, 2018
- ❖ Dementia Care Specialist Training (TTT) thru Crisis Prevention Institute
- ❖ Memory Cafes
- ❖ Church Sector

- 1st Annual Dementia Friendly AL Golf Classic
- Distributed 5,000 DRG's



2018



- Awarded 2nd \$100,000 DFC Grant
- Certified 136 care professionals thru AFA *Partners* In Care Training 4-Cities/4-Days
- Selected (3) cities to receive a \$10,00 Mini-Grant
- 2nd Annual Dementia Friendly Alabama Golf Classic
- Distributed 8,000 DRG's
- Fostered more than 100 partnerships.
- Held the 1st of 7 Memory Cafés
- NEW Website
- Initiative even mentioned in a book “Blessed: Stories About Caregiving”

**We're part of something rare, something
special and
something utterly revolutionary.**

But NONE of it would be possible without PARTNERSHIPS!



Do Your P.A.R.T

Help us fight for those who can't remember!

(P)artnerships

(A)cademics

(R)esources

(T)raining

“I can do things you cannot,
you can do things I cannot;
together we can do great things!”



CONTACT INFO

Stephanie C. Holmes

Dementia Friendly Alabama Initiative

Central Alabama Aging

Stephanie.Holmes@adss.alabama.gov

(334) 240-4680 x.105

DementiaFriendlyAlabama.org



DEMENTIA CARE & CURE INITIATIVE

FLORIDA DEPARTMENT OF ELDER AFFAIRS

Developing Dementia-Caring Communities Across Florida

Mission:

To engage communities across the state to be more dementia friendly, promote better care for Floridians affected by dementia, and support research efforts to find a cure.

Vision:

To see all Florida communities engaged in providing better care for those affected by dementia while we work towards a cure.

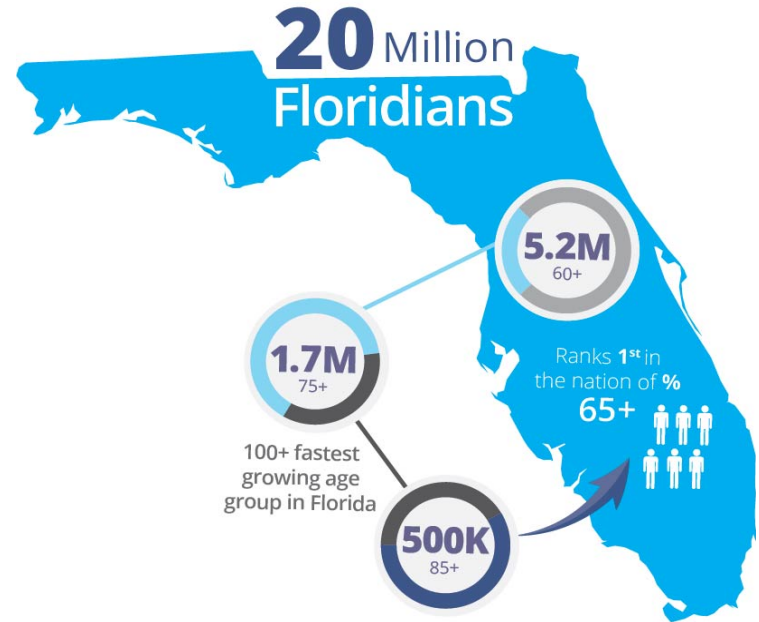
Goals:

- Increase awareness of dementia and of services and supports for those with dementia, their families, and caregivers.
- Provide assistance to dementia-caring communities.
- Continue advocacy for care and cure programs.



Why focus on dementia?

- Florida has the second highest incidence rate of Alzheimer's Disease in the nation – only behind California.
- There are approximately 540,000 individuals currently living with Alzheimer's Disease in Florida
- By 2025, it is estimated 720,000 individuals will be living with Alzheimer's disease in Florida.
- There are approximately 1,121,000 unpaid caregivers in Florida that care for loved ones with Alzheimer's disease or a related dementia.
- Alzheimer's disease is the 6th leading cause of death across all ages in the United States.
- 1 in 7 persons with Alzheimer's disease lives alone.



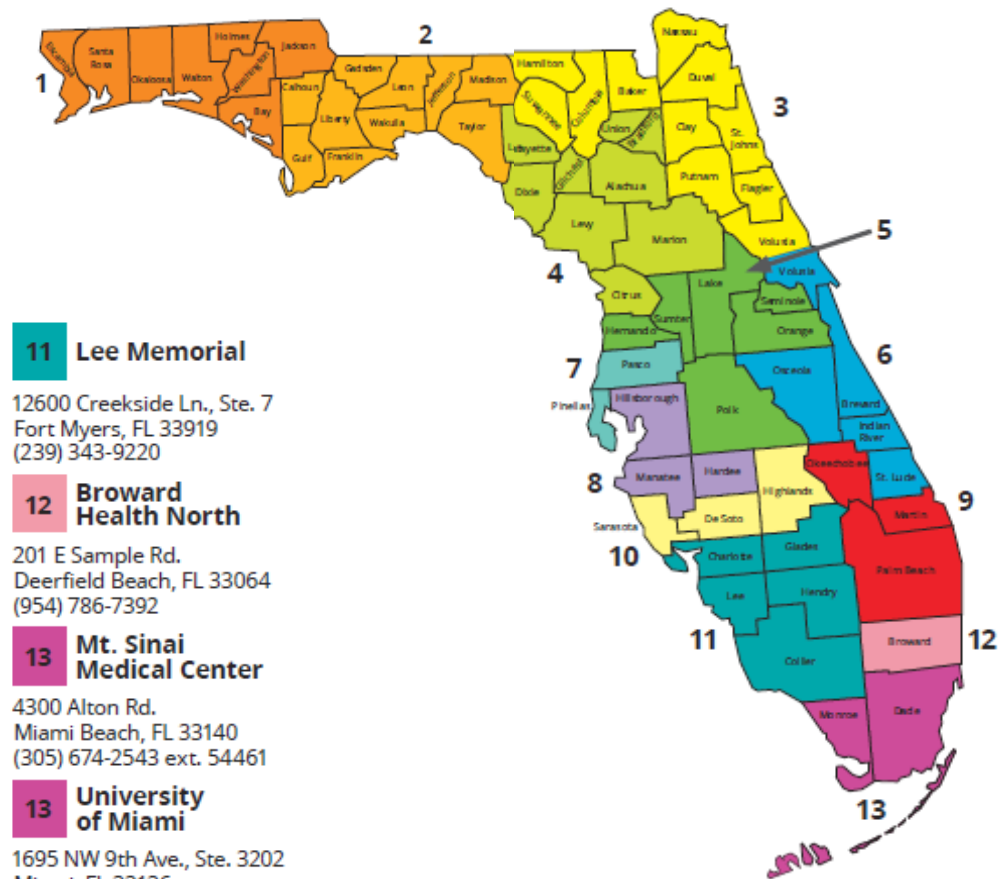
Participating DCCI Communities



MEMORY DISORDER CLINIC LOCATIONS

- 1 West Florida Hospital**
8383 N Davis Hwy.
Pensacola, FL 32514
(850) 494-6490
- 2 Tallahassee Memorial**
1401 Centerville Rd., Ste. 504
Tallahassee, FL 32308
(850) 431-5001
- 3 Mayo Clinic Jacksonville**
4500 San Pablo Rd.
Jacksonville, FL 32224
(904) 953-7103
- 4 University of Florida**
1149 Newell Dr.
Gainesville, FL 32611
(352) 273-5550
- 5 Orlando Health Center for Aging**
21 W Columbia St.
Orlando, FL 32806
(321) 841-9700
- 5 Florida Hospital Orlando**
601 E Rollins Street
Orlando, FL 32803
(407) 303-3408

- 6 East Central Florida**
3661 S Babcock St.
Melbourne, FL 32901
(321) 434-7612
- 7 Morton Plant**
430 Morton Plant St., Ste. 402
Clearwater, FL 33756
(727) 461-8635
- 8 University of South Florida**
3515 E Fletcher Ave.
Tampa, FL 33613
Phone: (813) 974-3100
- 9 St. Mary's Medical Center**
5305 Greenwood Ave., Ste. 102
West Palm Beach, FL 33407
(561) 882-6363
- 9 Florida Atlantic University**
777 Glades Rd., Bldg. AZ-79
Boca Raton, FL 33431
(561) 297-0502
- 10 Sarasota Memorial**
1515 S Osprey Ave., Ste. A-1
Sarasota, FL 34239
(941) 917-7197



- 11 Lee Memorial**
12600 Creekside Ln., Ste. 7
Fort Myers, FL 33919
(239) 343-9220
- 12 Broward Health North**
201 E Sample Rd.
Deerfield Beach, FL 33064
(954) 786-7392
- 13 Mt. Sinai Medical Center**
4300 Alton Rd.
Miami Beach, FL 33140
(305) 674-2543 ext. 54461
- 13 University of Miami**
1695 NW 9th Ave., Ste. 3202
Miami, FL 33136
(305) 355-9065

AREA AGENCIES ON AGING OFFICES

PSA 1

Northwest Florida
Area Agency on Aging, Inc.
5090 Commerce Park Circle
Pensacola, FL 32505
(850) 494-7101
www.nwflaaa.org

PSA 2

Area Agency on Aging
for North Florida, Inc.
2414 Mahan Drive
Tallahassee, FL 32308
(850) 488-0055
www.aaanf.org

PSA 3

Elder Options
100 SW 75th Street, #301
Gainesville, FL 32607
(352) 378-6649
www.agingresources.org

PSA 4

ElderSource,
The Area Agency on Aging
of Northeast Florida
10688 Old St Augustine Road
Jacksonville, FL 32257
(904) 391-6600
www.myeldersource.org

PSA 5

Area Agency on Aging
of Pasco-Pinellas, Inc.
9549 Koger Boulevard,
Gadsden Bldg., Suite 100
St. Petersburg, FL 33702
(727) 570-9696
www.agingcarefl.org

PSA 6

Senior Connection
Center, Inc.
8928 Brittany Way
Tampa, Florida 33619
(813) 740-3888
www.seniorconnectioncenter.org

PSA 7

Senior Resource Alliance
988 Woodcock Road, Suite 200
Orlando, FL 32803
(407) 514-1800
www.seniorresourcealliance.org

PSA 8

Area Agency on Aging
for Southwest Florida
15201 North Cleveland Avenue
Suite 1100
North Fort Myers, FL 33903
(239) 652-6900
www.aaaswf.org

PSA 9

Area Agency on Aging of Palm
Beach/Treasure Coast,
4400 N. Congress Avenue
West Palm Beach, FL 33407
(561) 684-5885
www.youragingresourcecenter.org

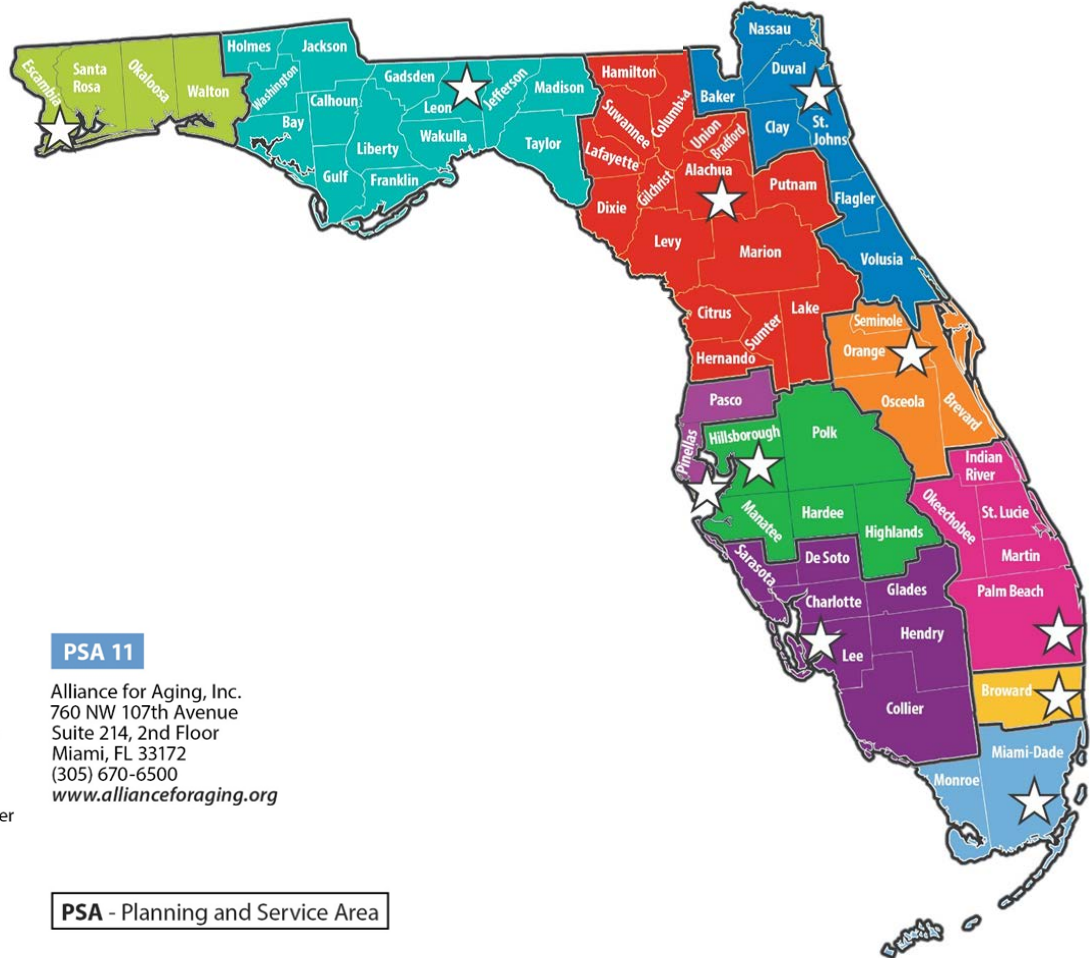
PSA 10

Aging and Disability Resource Center
of Broward County, Inc.
5300 Hiatus Road
Sunrise, FL 33351
(954) 745-9567
www.adrcbroward.org

PSA 11

Alliance for Aging, Inc.
760 NW 107th Avenue
Suite 214, 2nd Floor
Miami, FL 33172
(305) 670-6500
www.allianceforaging.org

PSA - Planning and Service Area



What is a Dementia-Caring Community in Florida?

Your Dementia-Caring Community



- Education and awareness of what dementia is and on inclusive and respectful Dementia-Caring practices.
- Input from and advocacy roles for individuals living with dementia.
- Appropriate community engagement activities for those living with dementia and their caregivers.
- Examining current resources and advocating for their continued funding while spreading awareness of services to those in need.
- Explanation of and encouragement to participate in research.

Education Specifics

- Basic information about dementia
- Minimal pathophysiology review
- Embedded with scenarios specific to the audience
- Open discussions of experiences
- Strong emphasis on local resources
- Pre and post test for measuring acquired knowledge
- Face-to-face presentations or embedded on online training platforms

Example: You are a firefighter responding to a call where neighbors reported smelling smoke coming from a home. Upon arrival, you find an elderly, very confused female with smoke coming out of the oven.





Signs and Symptoms of Dementia

- Memory loss that disrupts daily life
- Changes in planning and solving problem
- Difficulty completing familiar tasks
- Confusion with time and place
- Withdrawal from work or social activities
- Easily losing train of thought

Tips for Communicating

- Ask simple questions
- Be patient when waiting for a response
- Make eye contact
- Give visual cues

Resources in Tallahassee/Leon County

Tallahassee Memorial HealthCare
Memory Disorder Clinic
1401 Centerville Road, Suite 504
Tallahassee, FL 32308
(850) 431-5001
www.tmh.org/services/neuroscience/memory-disorders

Area Agency on Aging for North Florida
2414 Mahan Drive
Tallahassee, FL 32308
(850) 488-0055 or 1-800-96-ELDER
www.aag-nf.org



Contact Information

Christine Didion, MSW
Dementia Care and Cure Initiative
Program Manager
Florida Department of Elder Affairs
4040 Esplanade Way
Tallahassee, Florida 32399
(850) 414-2028
DidionC@elderaffairs.org



Panel Discussion