

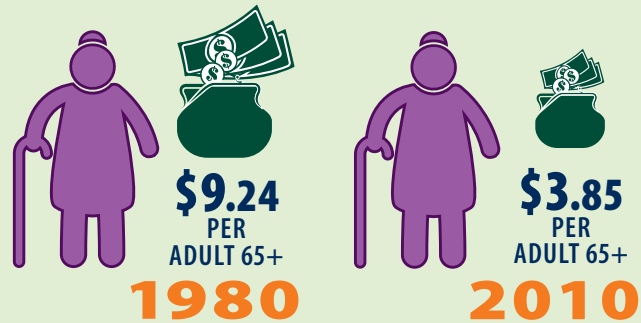
FUNDING FOR SENIORS NOT KEEPING PACE

From 1980 to 2010

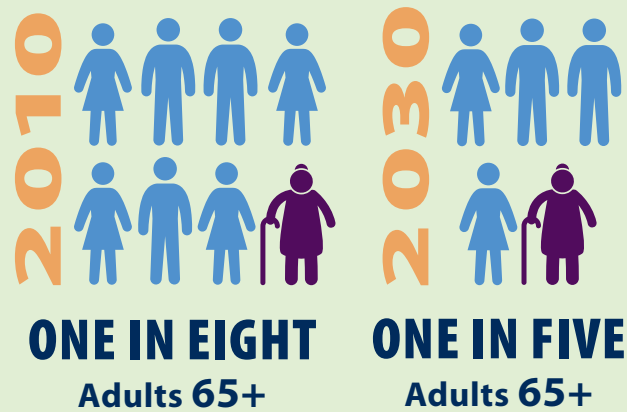
60%
POPULATION INCREASE
ADULTS 65+

34%
FUNDING DECREASE
AoA FUNDING

Current Funding Levels Unable to Meet Increased Need

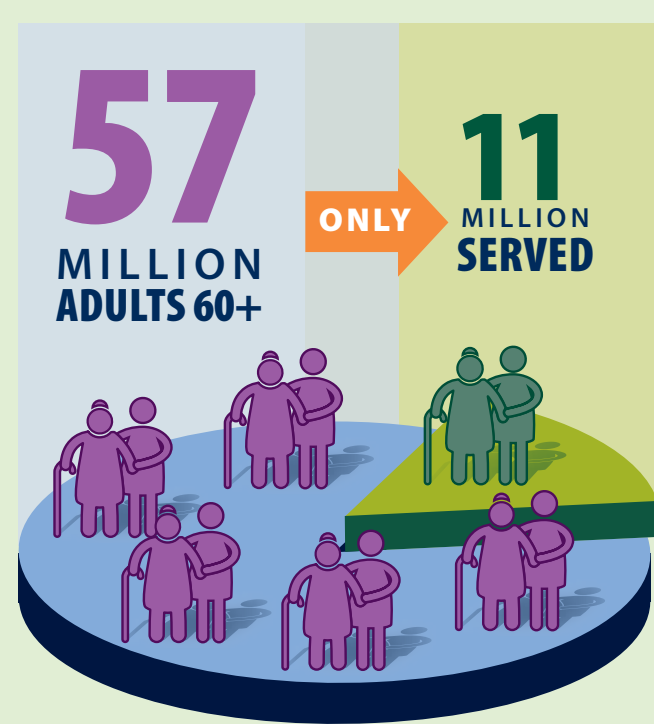


Percent of Seniors Continues to Grow

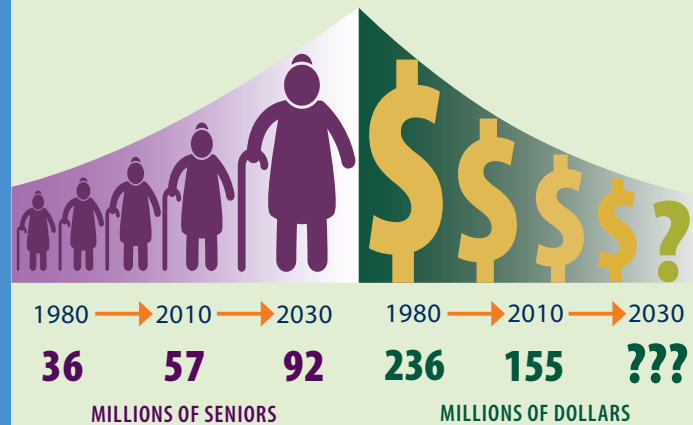


© 2013 www.NASUAD.org

AGING SERVICES UNABLE TO MEET DEMAND



If these trends continue...*



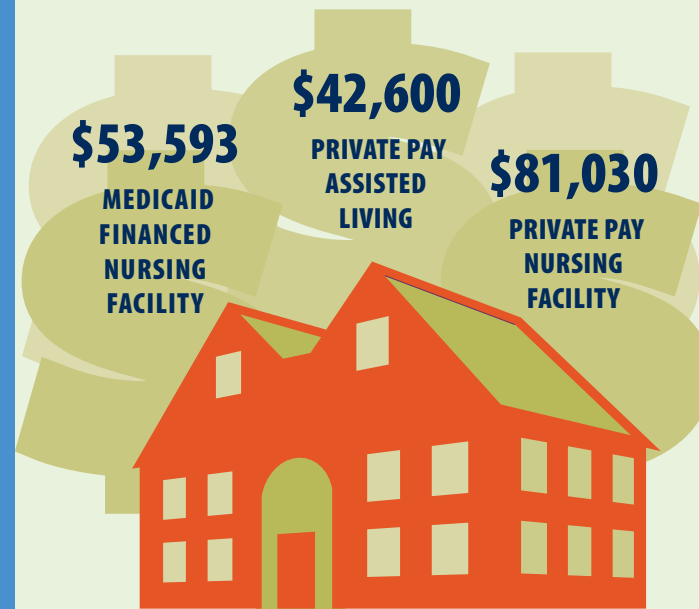
*These projections are based on historic inflation rates and projected population growth

...millions will be eligible and few will be served

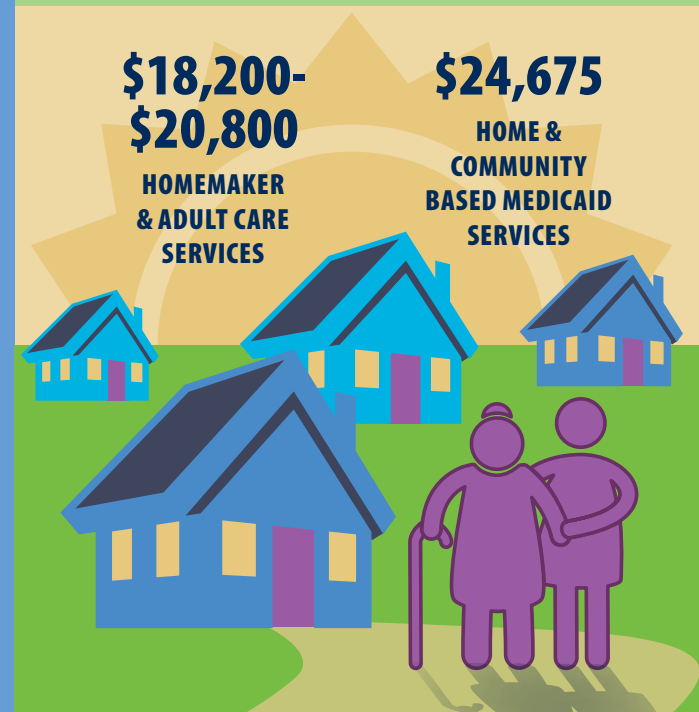
© 2013 www.NASUAD.org

AGING IN PLACE IS COST EFFECTIVE

Annual Facility Care Costs

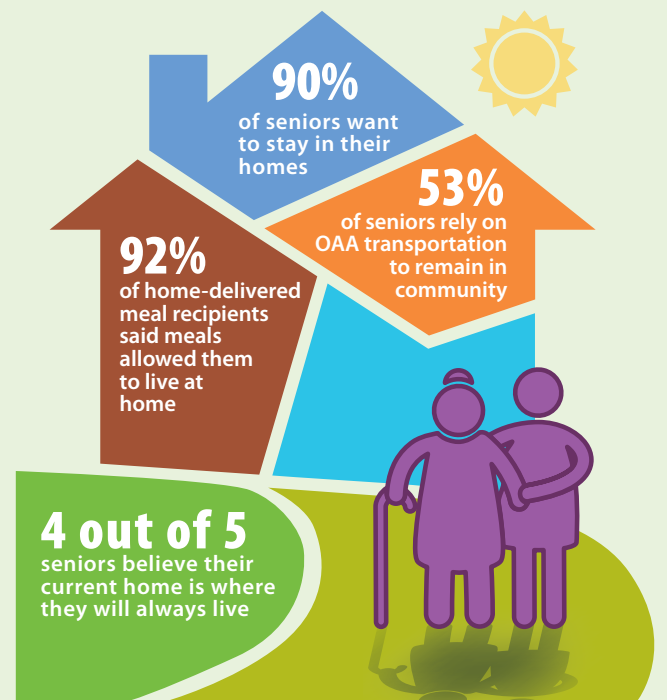


Annual Home and Community Care Costs



© 2013 www.NASUAD.org

OLDER AMERICANS ACT SERVICES HELP SENIORS STAY AT HOME



© 2013 www.NASUAD.org

SOURCES:

- FUNDING FOR SENIORS NOT KEEPING PACE**
- NASUAD Calculation(s) based on AoA, www.aoa.gov/AoARoot/Aging_Statistics/future_growth/future_growth.aspx, CRS, http://assets.opencrs.com/rpts/RL32437_20040618.pdf and AoA, www.aoa.gov/AoARoot/About/Budget/DOCS/FY_2013_AoA_CJ_Feb_2012.pdf
 - AoA, www.aoa.gov/AoARoot/Aging_Statistics/future_growth/future_growth.aspx
- AGING SERVICES UNABLE TO MEET DEMAND**
- AoA, http://agidnet.org/DataGlance/Pop_State/
 - AoA, <http://agidnet.org/DataGlance/SPR/>
 - AoA, www.aoa.gov/AoARoot/Aging_Statistics/future_growth/future_growth.aspx
 - NASUAD Calculation(s) based on CRS, http://assets.opencrs.com/rpts/RL32437_20040618.pdf and AoA, www.aoa.gov/AoARoot/About/Budget/DOCS/FY_2013_AoA_CJ_Feb_2012.pdf
- AGING IN PLACE IS COST EFFECTIVE**
- KFF, <http://www.kff.org/medicaid/upload/7576-02.pdf>
 - MetLife, www.metlife.com/mmi/research/2012-market-survey-long-term-care-costs.html#keyfindings
 - KFF, <http://www.kff.org/medicaid/upload/7720-06.pdf>
- OAA SERVICES HELP SENIORS AGE IN PLACE**
- AARP, assets.aarp.org/rgcenter/ppi/liv-com/aging-in-place-2011-full.pdf
 - ACL, http://www.acl.gov/About_ACL/Budget/docs/FY2014_ACL_CJ.pdf

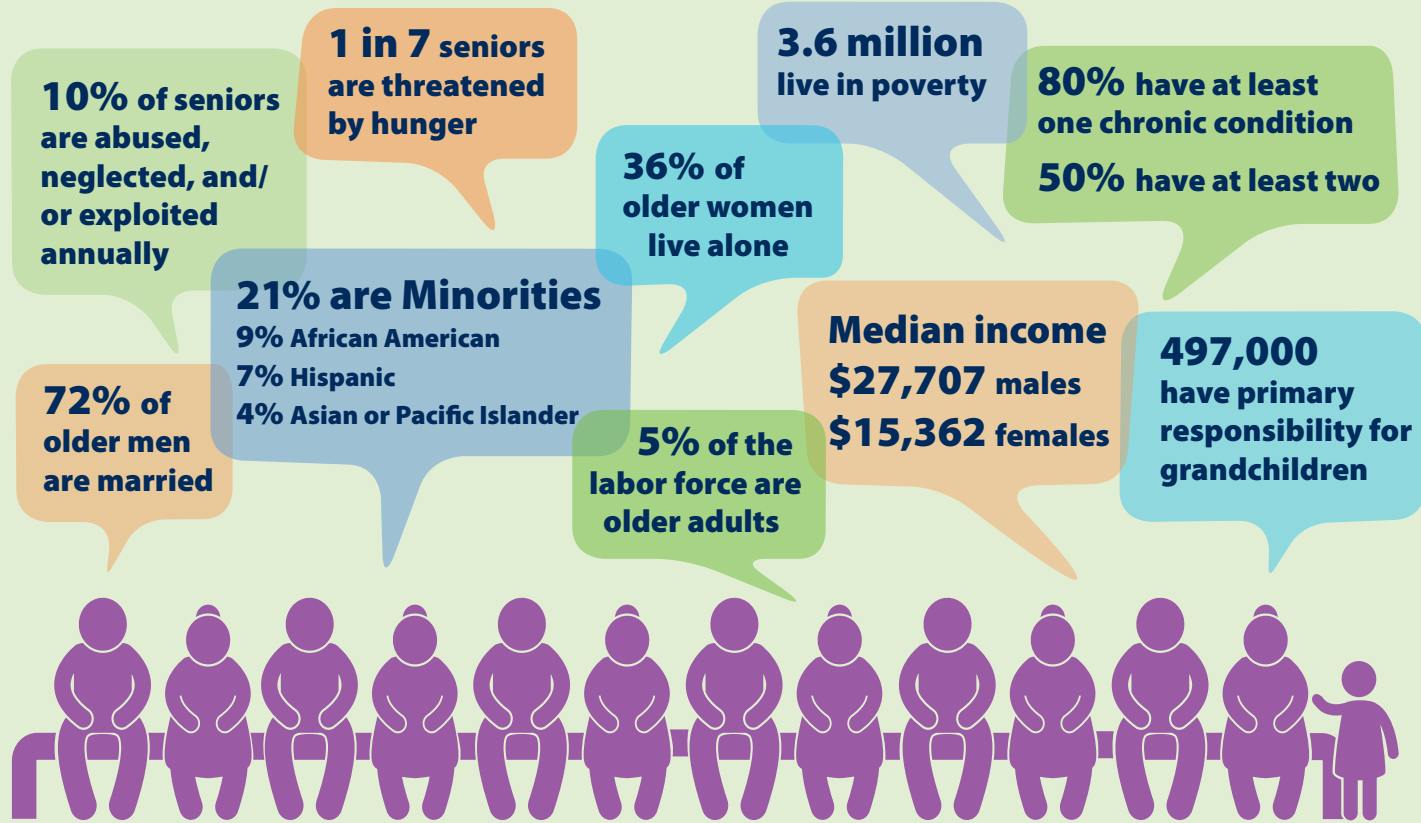


National Association of States
 United for Aging and Disabilities
 1201 15th Street NW, Suite 350
 Washington, DC 20005
 Phone: 202-898-2578
 www.nasuad.org

Stay informed with us on:



2012 PROFILE OF OLDER AMERICANS



SOURCES: AoA, www.ot/Aging_Statistics/Profile/index.aspx; Meals on Wheels Research Foundation, www.nfesh.org/cgi-bin/download.cgi; ACL, http://www.acl.gov/About_ACL/Budget/docs/FY2014_ACL_CJ.pdf

© 2013 www.NASUAD.org

AGING IN AMERICA

We Can Do Better

