

# Leveraging Multiple Grant Funded Projects to Achieve Success

Experiences from Alaska, Indiana, and Wisconsin

HCBS Conference

Thursday, December 3, 2020

# Agenda



Administration on Disability Priority Areas



Unique Grant Models in Alaska, Indiana, and Wisconsin



Panel Discussion



Closing & Questions

# Welcome from the Administration for Community Living

## **Jennifer Johnson**

Deputy Commissioner, Administration on Disabilities  
Director, Office of Disability Service Innovations

Administration for Community Living,  
U.S. Department of Health and Human Services



# The Importance of Community Living

- Nearly 57 million people with disabilities live in the community and increasingly people have the expectation that they lead full lives in the community.
- The number of individuals with intellectual and developmental disabilities (I/DD) living in community settings and receiving home and community based services (HCBS) increased dramatically in the last two decades, resulting in:
  - Better outcomes, including choice and community integration.
  - Wide variation in the accessibility of quality HCBS across the country.
- Having meaningful access to community settings is important given the vital role social inclusion can play in decreasing the risk of abuse and neglect.
  - Research shows people living in the community have better quality-of-life outcomes related to their health, independence, privacy, and social engagement.



# Administration on Disabilities (AoD)

## Creating Change, Improving Lives

- Equipping individuals with disabilities of all ages with opportunities, tools and supports to lead lives of their choice in their community.

### •Moving from:

- Institutionalization
- Isolation
- Poverty/joblessness
- Dependency

### •To:

- Community living
- Inclusion & participation
- Financial well being
- Independence & Self- Determination



# AoD Priority Areas



Achieving Healthy  
Equity



Achieving Economic  
Security and mobility



Protecting Rights and  
Preventing Abuse



Empowering Individuals, Families  
and Communities



# Health Equity

Women'  
Heath/Maternal  
Morbidity  
(HHS)

Human Dignity  
and Health Equity  
Center

**NEW**

Community Based  
Transition Grants  
– Healthcare  
Transitions

**NEW**

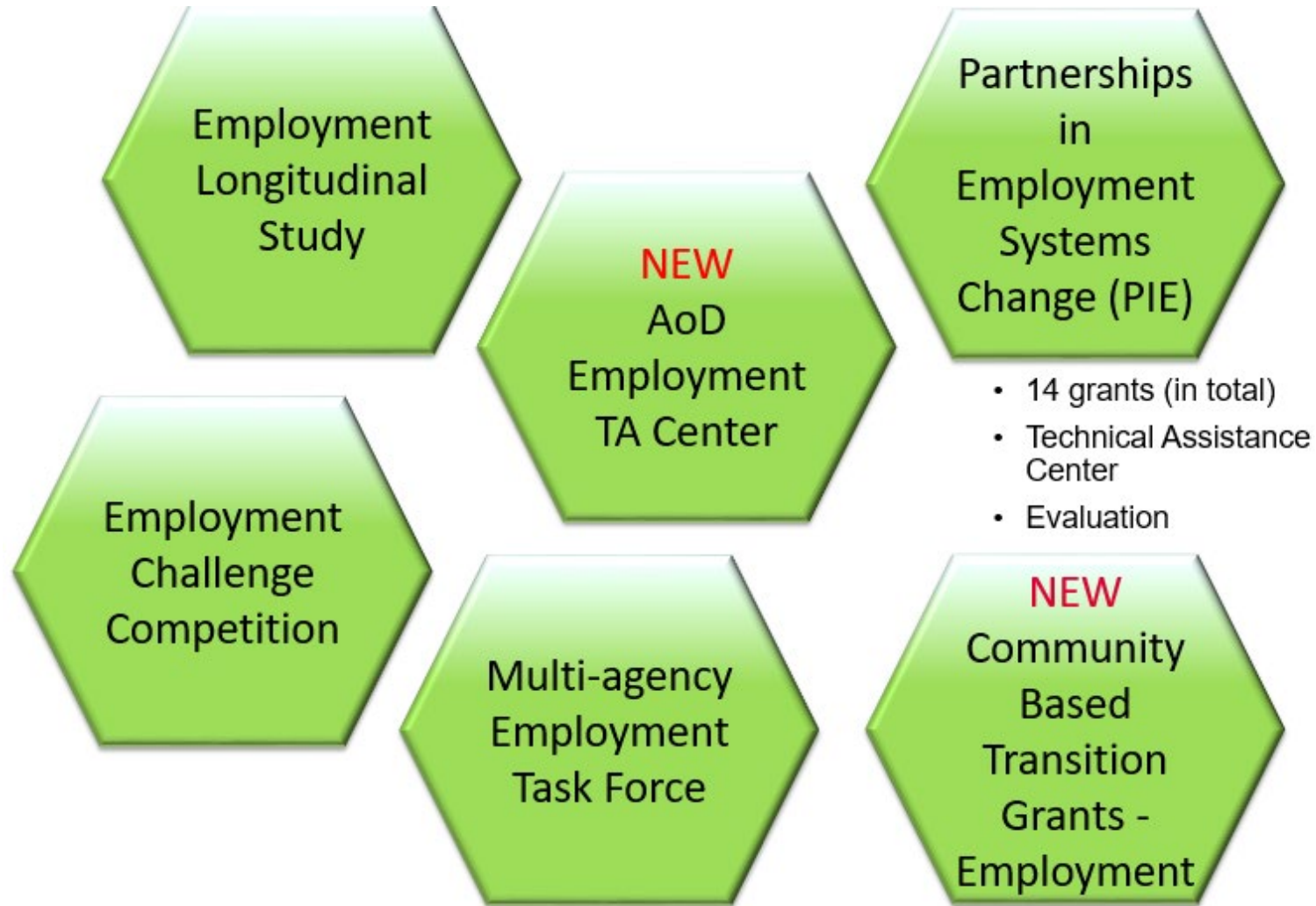
Healthcare  
Workforce Training  
Grant

ID/DD Prevalence  
& Health  
Surveillance

National Training  
Center on Dual  
Diagnosis



# Achieving Economic Security and Mobility

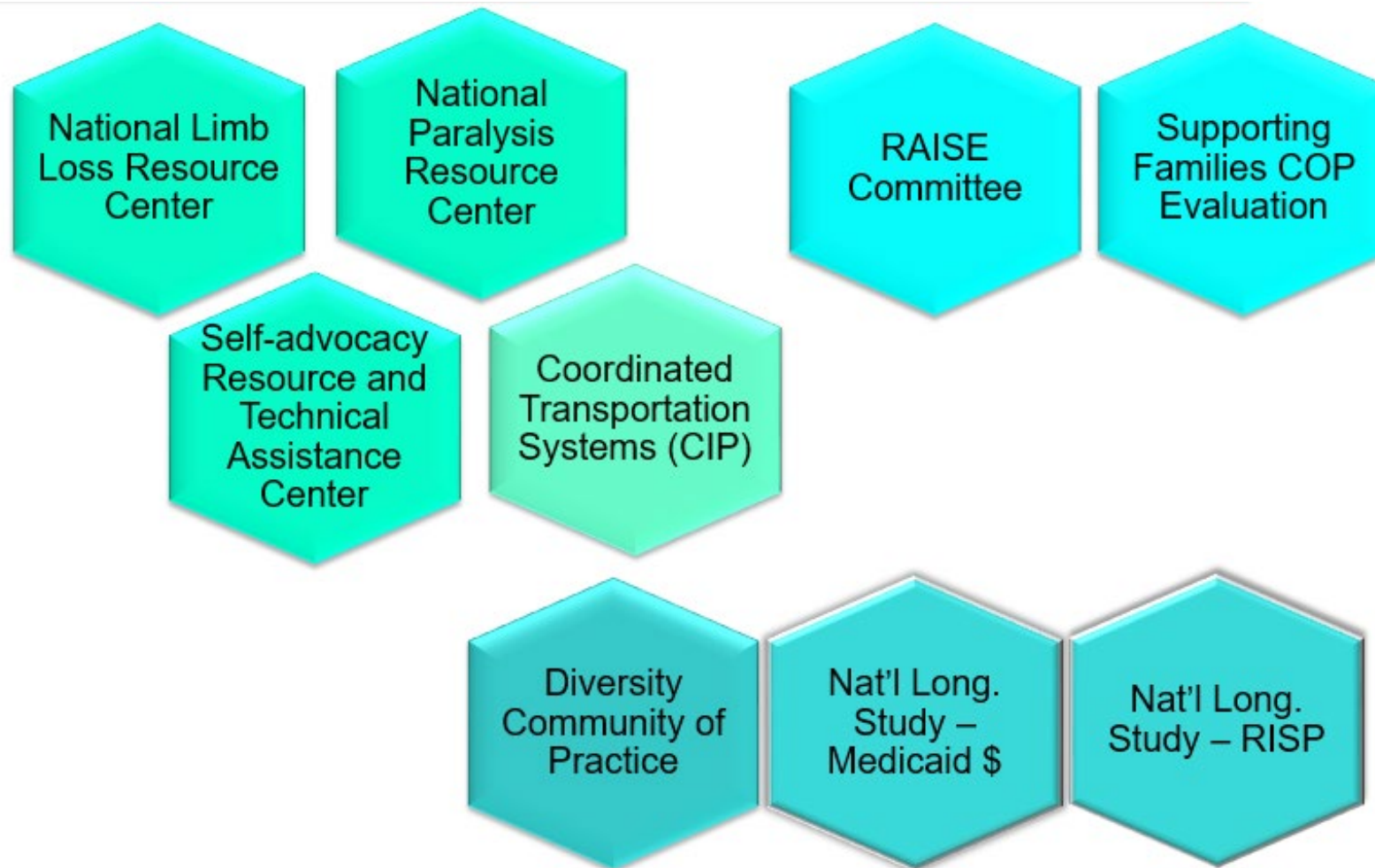




# Protecting Rights and Preventing Abuse



# Empowering Individuals, Families, and Communities



# Living Well: Putting Models Into Practice

Joint  
Report



ACL  
Administration for Community Living

U.S. DEPARTMENT OF  
HEALTH AND HUMAN SERVICES  
OFFICE FOR  
CIVIL RIGHTS

U.S. Department of Health and Human Services  
Office of Inspector General,  
Administration for Community Living, and  
Office for Civil Rights

## Ensuring Beneficiary Health and Safety in Group Homes Through State Implementation of Comprehensive Compliance Oversight

January 2018








- Improving reporting practices will not, by itself, solve the problem of abuse and neglect – there are a lot of factors involved in the issue, including workforce shortages, a gap in adequate training, the need for increased community-based options, to name just a few.
- ACL invested in *Living Well – Model Approaches for Enhancing the Quality, Effectiveness and Monitoring of Home and Community Based Services for Individuals with Developmental Disabilities (Living Well)* to develop and test model approaches of a coordinated and comprehensive system that will support quality community living.



ACL  
Administration for Community Living

# ACL Awarded Eight Living Well Grants

2017 1 Cohort 1	
	University of Georgia Institute on Human Development
	University of New Hampshire Institute on Disability
	Virginia Commonwealth University Partnership for People with Disabilities

2018 2 Cohort 2	
	Alaska Governor's Council on Disabilities and Special Education
	University of Idaho Center on Disabilities and Human Development
	Indiana Family and Social Services Administration
	University of Missouri-Kansas City Institute for Human Development
	Wisconsin Board for People with Developmental Disabilities



# Core Components

Each grantee designed a model approach that included two interrelated core components for enhancing and assuring the independence, integration, safety, health, and well-being of individuals living in the community:

- 1. *Community monitoring*** – Develop and implement a coordinated system with the incorporation of partnerships to monitor the safety, health, and well-being of individuals with I/DD living in HCBS, and identifying and eliminating risk factors for abuse, neglect, and exploitation.
- 2. *Community capacity building*** – Apply evidence-based practices and innovative strategies to support individuals with I/DD living in or moving to HCBS; improve access to and quality of community services; reduce and mitigate abuse and neglect; and support individuals' empowerment, independence, and rights.

## Quality Community Living



# Partnerships in Employment Systems Change Grants

- The purpose of these grants is to prioritize employment as the first and preferred option for youth and young adults with I/DD.
- Grantees enhance collaboration across existing state systems, including programs administered by state developmental disabilities agencies, state vocational rehabilitation agencies, state educational agencies, and other entities to increase competitive employment outcomes for youth and young adults with I/DD.
- Grantees have:
  - Developed policies that support competitive integrated employment
  - Removed barriers to competitive integrated employment
  - Implemented strategies and best practices to improve employment outcomes for youth and young adults with I/DD
  - Enhanced statewide collaborations to facilitate the transition process from the school setting to the employment setting



# PIE States

## Current PIE States

- District of Columbia
- Hawaii
- Kentucky
- Massachusetts
- South Carolina
- Utah

## Previous PIE States

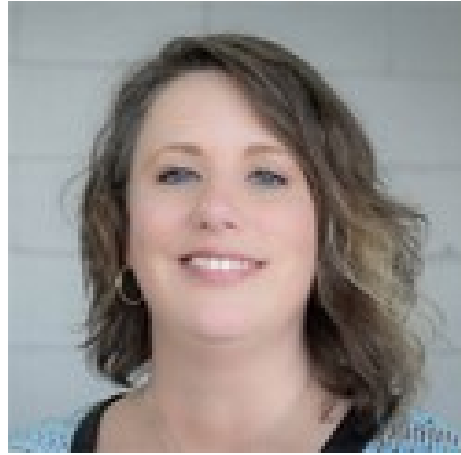
- Alaska
- California
- Iowa
- Mississippi
- Missouri
- New York
- Tennessee
- Wisconsin



# Meet the Panelists



**Kristin Vandagriff**  
Executive Director  
*Alaska Governor's  
Council on Disabilities  
and Special Education*



**Kim Opsahl**  
Associate Director  
*Indiana Division of  
Disability and  
Rehabilitative Services*



**Beth Swedeen**  
Executive Director  
*Wisconsin Board for  
People with  
Developmental  
Disabilities*

*Facilitator*



**Diana Caldwell**  
Managing Consultant  
*The Lewin Group*





GOVERNOR'S COUNCIL  
ON DISABILITIES &  
SPECIAL EDUCATION

Kristin Vandagriff, Executive Director

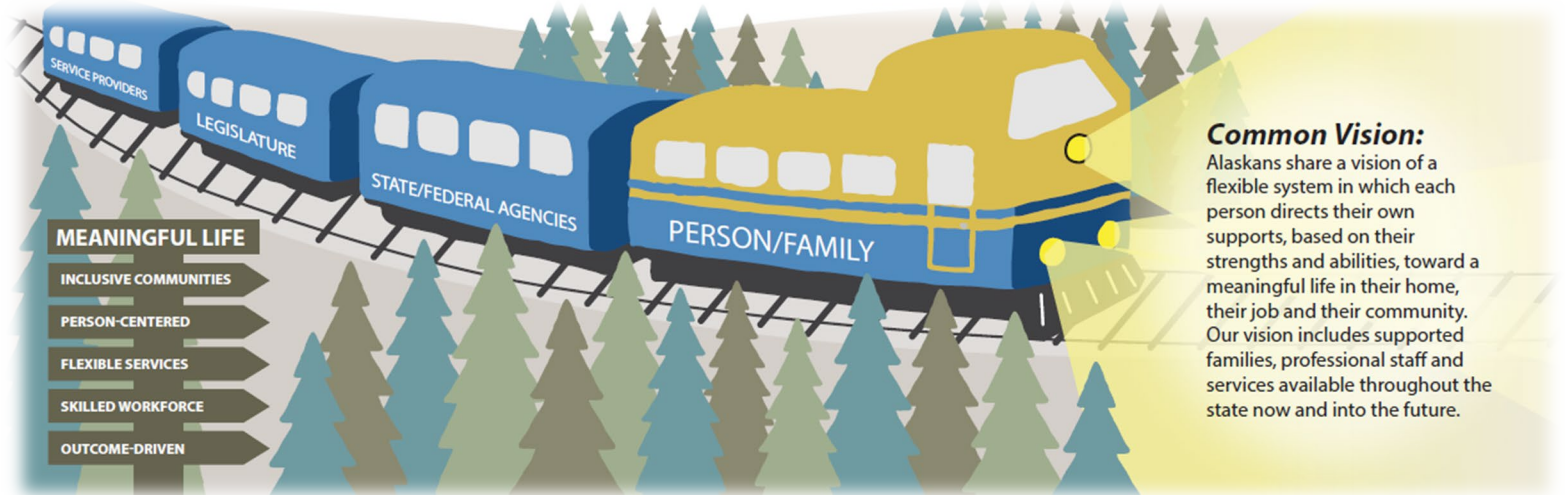
Alaska Governor's  
Council on Disabilities  
and Special Education



# Current/Recent (PNS) Grants:

- **Current PNS Grant - Alaska Living Well Project:**

- The overarching goal of this project is to increase the community integration, health, safety, independence, and well-being of individuals with developmental disabilities through realization of our DD vision:



- **Recent PNS Grant – Alaska Integrated Employment Initiative (Partnerships in Employment Grant):**

- Enhancing employment outcomes for Alaskan youth and young adults with developmental disabilities.



# PNS Grant Priorities:

## Living Well:

1. Improve health and safety as well as independence and employment
2. Improve workforce sustainability and training
3. Increase leadership opportunities for self-advocates
4. Improve rights

DD Shared Vision Website: <http://dhss.alaska.gov/gcdse/Pages/ddsharedvision/default.aspx>

## Partnerships in Employment:

- Passage of Employment First law
- Repealed subminimum wage state regulation (only the 3<sup>rd</sup> state to do this)
- Repealed state high school graduation qualifying exam (retroactive provision)
- ABLE Act passage: <https://savewithable.com/ak/home.html>
- Alaska Disability Benefits 101 development/launch: <https://ak.db101.org/>
- Alaska Transition Handbook: Pathway to Adulthood and Employment: <http://dhss.alaska.gov/gcdse/Documents/TransitionsHandbook.pdf>
- **To learn more about Alaska's outcomes for this 5-year grant, visit:** Journal of Vocational Rehabilitation 47 (2017 "Alaska Case Study: Pathway to Employment for All in the Last Frontier:" <http://content.iospress.com/articles/journal-of-vocational-rehabilitation/jvr903>



# Model Overview - Living Well:

- Statewide Self Advocacy Summit
- Self-Advocacy Leadership Guide:  
<http://dhss.alaska.gov/gcdse/Documents/ddsharedvision/AlaskaAdvocacyLeadershipOpportunities.pdf>
- Self-advocacy trainings (rights, voting, how to share your story, et al)
- Plan of Care enhancement trainings (relating to health/safety, emergency preparedness, and employment)
- Person Centered/Directed trainings
- Cultural and Linguistic Competency Trainings
  - **\*\*\*Trainings are all co-led by a person with a DD\*\*\***
- Home assessment/accessibility and environmental modification enhancement
- Supported Decision-Making Agreements – increasing awareness and utilization
  - SDMA website: <http://dhss.alaska.gov/gcdse/Pages/projects/SDMA/default.aspx>
  - SDMA Agency Guide: <http://dhss.alaska.gov/gcdse/Documents/projects/SDMA/AgencyGuide.pdf>
  - SDMA Training Videos: <http://dhss.alaska.gov/gcdse/Pages/projects/SDMA/care.aspx>
- Improving accuracy of first person reporting through SDMA pilot
- Embedding Living Well staff in State DD agency to improve alignment of practices, policies, and procedures with the DD Shared Vision
- Community Relationship Builder pilot – building natural community supports
- DD Shared Vision Alignment survey





# Model Overview - Living Well:

- 10 partners total: P&A, UCEDD, IL, State DD agency, self advocacy organizations, statewide DD service provider association, and the trust
- Alaska's DD Council and the Alaska DD Systems Collaborative serve in an advisory role to the grant
- Quarterly project management meetings

- 10 small groups centered around topical areas:
  - Evaluation
  - Environmental Modification (EMOD)/HomeMap Assessment
  - Employment First
  - Challenging Behaviors
  - Home and Community Based Services (HCBS) Integrated Settings Transition
  - Direct Service Professional/Provider (Person-Centered)
  - Plan of Care
  - Community Relationship Building (building natural supports)
  - Self-Advocacy
  - Supported Decision making Agreements (SDMA)



# Indiana Family and Social Services Administration Division of Disability and Rehabilitative Services

**Kim Opsahl, Associate Director**

**[Kimberly.Opsahl@fssa.in.gov](mailto:Kimberly.Opsahl@fssa.in.gov)**

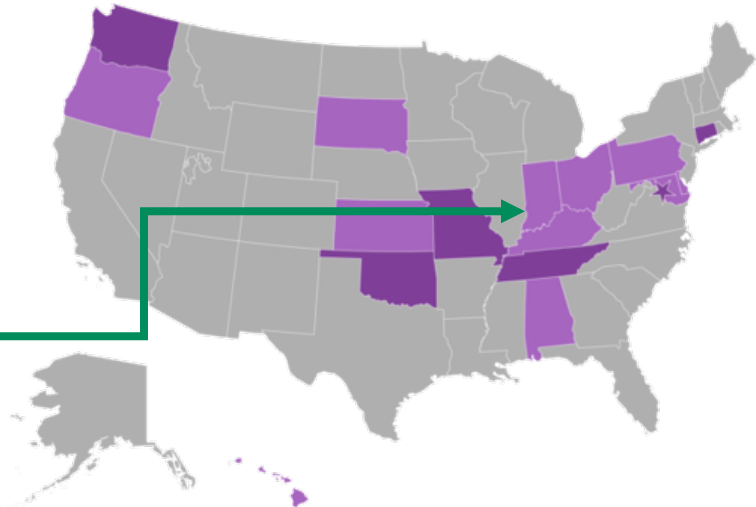




# • How it Started - 2016

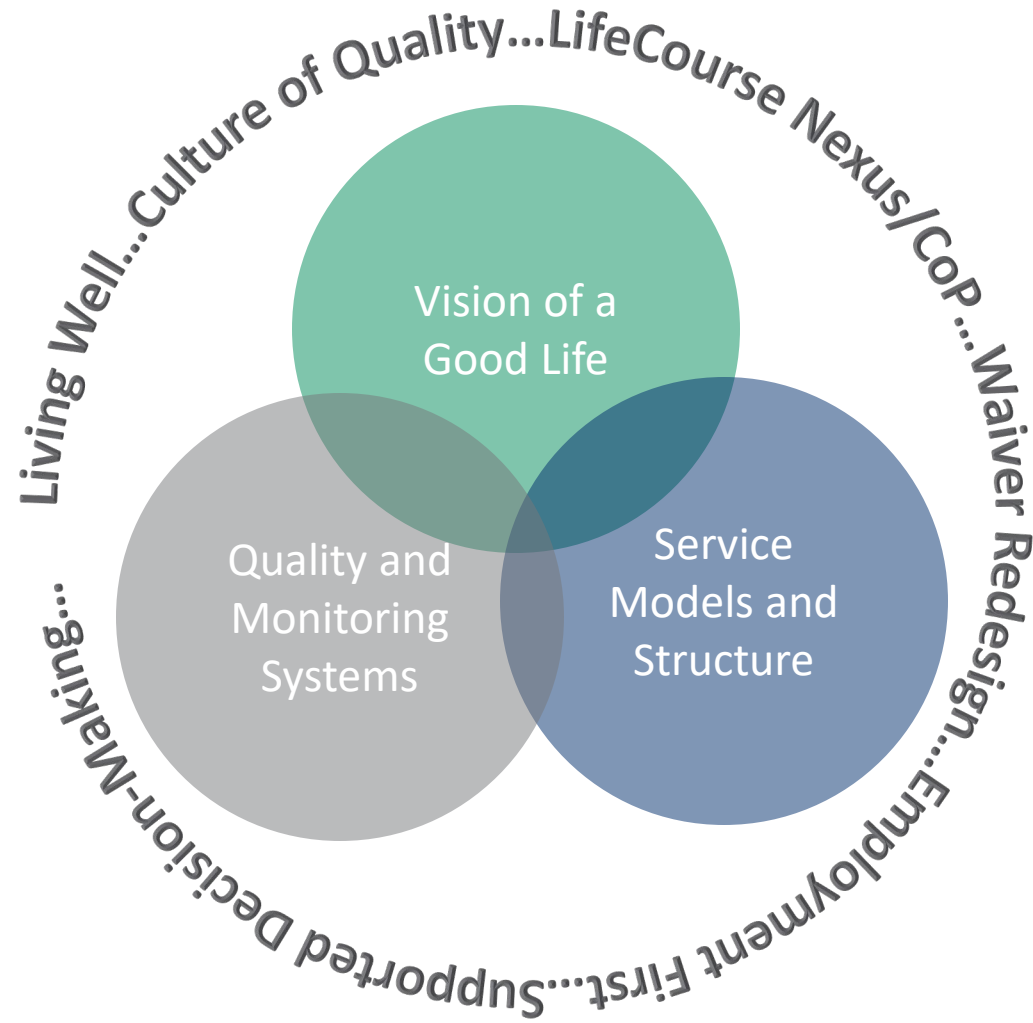


So, We Started Here





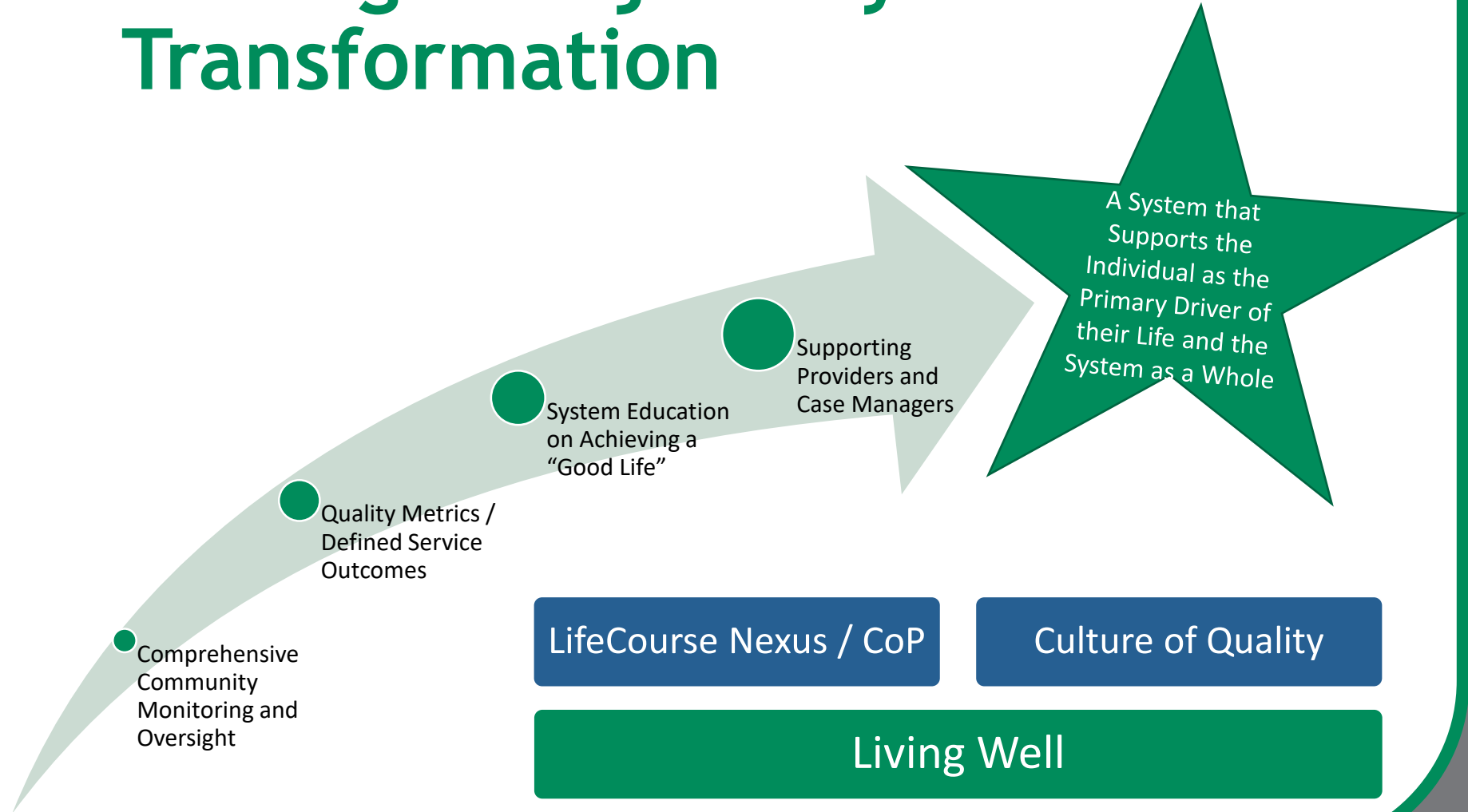
# • How It's Going







# • Setting a Trajectory Toward Transformation



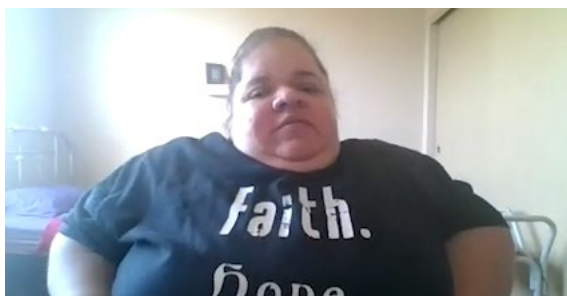


## • Using CtLC Framework as a Model for Stakeholder Engagement



- Engage local and statewide stakeholders
- Shared vision, common language
- Pilot and scale practices and innovations
- Enhance personal and professional skills
- Enhance programmatic, organizational, or systematic procedures





Sally Flaschberger  
Living Well Project Manager  
[Sally.Flaschberger@wisconsin.gov](mailto:Sally.Flaschberger@wisconsin.gov)  
414-704-8248



Beth Swedeen,  
Living Well Principal Investigator  
[Beth.Swedeen@wisconsin.gov](mailto:Beth.Swedeen@wisconsin.gov)

# Wisconsin

**LIVING / WELL**

Healthy, Safe and Connected

- Capacity building to increase health and safety and improve quality of life of people with IDD receiving Home and Community Based Services
- Improve monitoring systems, including equipping people with disabilities and their families with tools to monitor health and safety and report concerns
- Project focuses on using a feedback loop with stakeholders to evaluate the usefulness of the tools created and improvement to the resources, services and supports in our state.

# Wisconsin

**LIVING / WELL**

Healthy, Safe and Connected

## Maintaining Quality During COVID-19

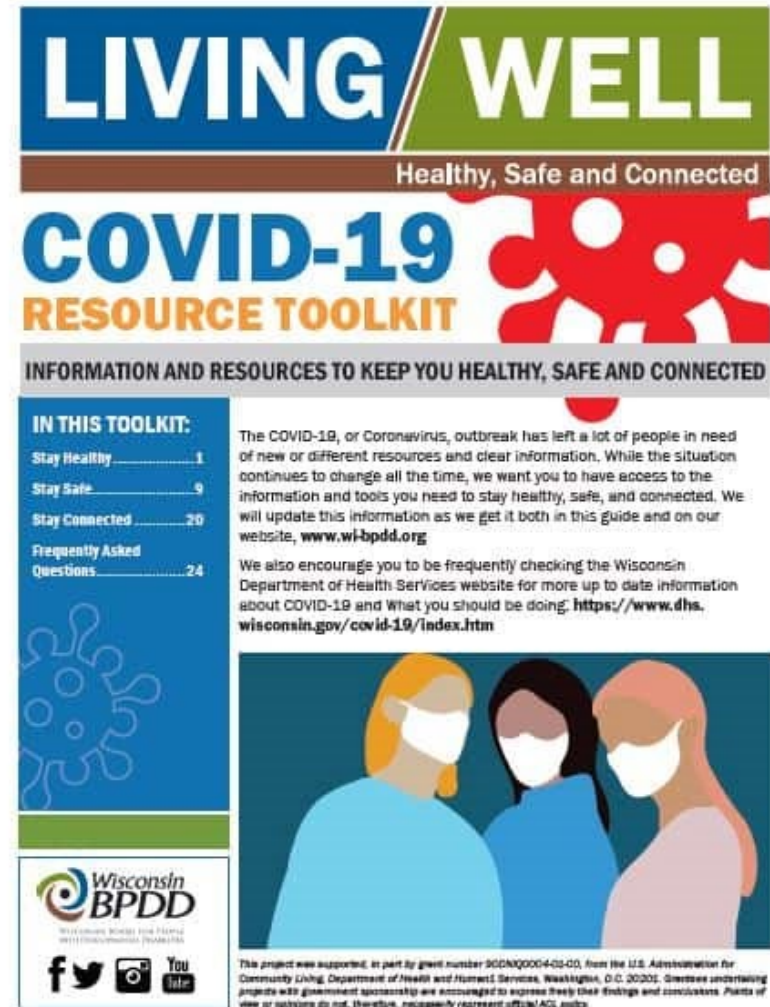
- Wisconsin utilized a feedback loop with providers, self-advocates and funders on several projects
- Conducted a virtual services evaluation and developed resources help maintain quality and drive system change

# COVID-19 Projects

- Home and Community Based Services virtual services evaluation
- Creation of a COVID-19 Toolkit in plain language
- Collaboration with Wisconsin Department of Health Services on plain language COVID-19 webpage



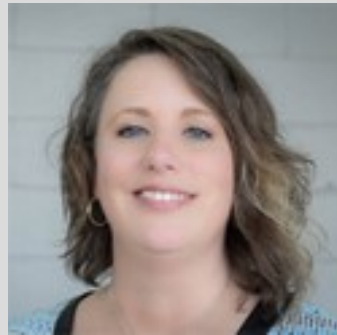
# Living Well COVID-19 Toolkit



<https://wi-bpdd.org/wp-content/uploads/2020/09/LW-Covid-Toolkit-online-Final-fillable.pdf>

# Panel Discussion: Question 1

As recipients of multiple PNS grants, you have demonstrated how synergy across projects can promote more effective solutions. How are your grant projects intersecting? In what ways has this synergy benefitted your projects and your state?



Kim Opsahl



Beth Swedeen



Kristin Vandagriff



# Panel Discussion: Question 2

Each of you has successfully engaged a coalition of stakeholders who are instrumental for your PNS grants and beyond. What is working well for you? What strategies have led to this success?



Beth Swedeen



Kristin Vandagriff



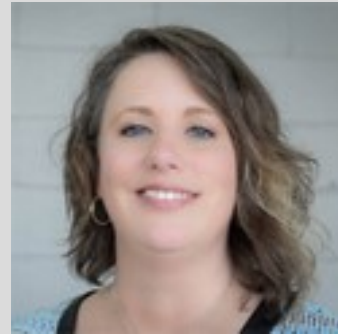
Kim Opsahl

# Panel Discussion: Question 3

What lessons or strategies have you learned that you will apply to future grant opportunities?



Kristin Vandagriff



Kim Opsahl



Beth Swedeen

# Closing and Questions



Thank you for coming today.